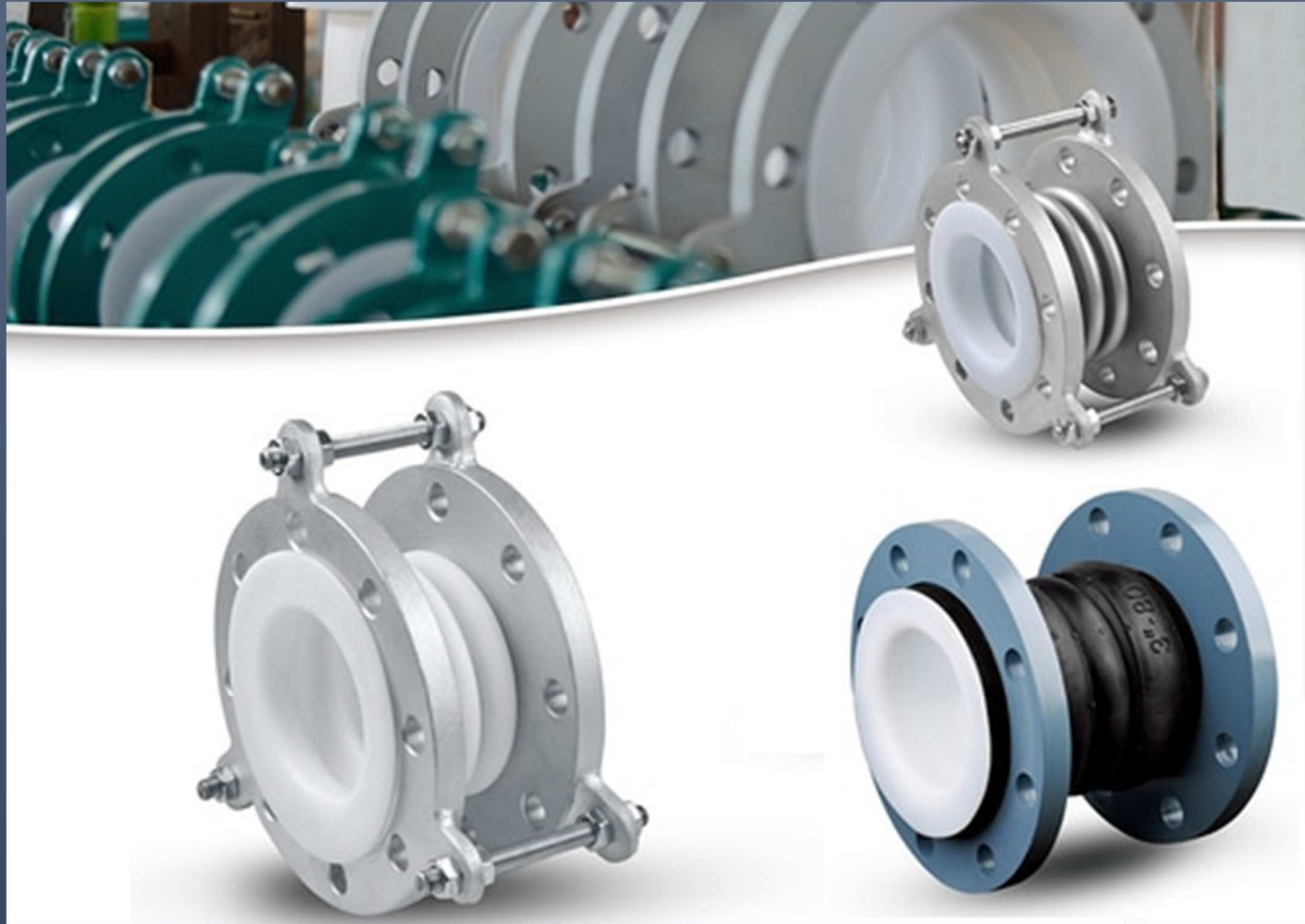


# PTFE EXPANSION JOINT



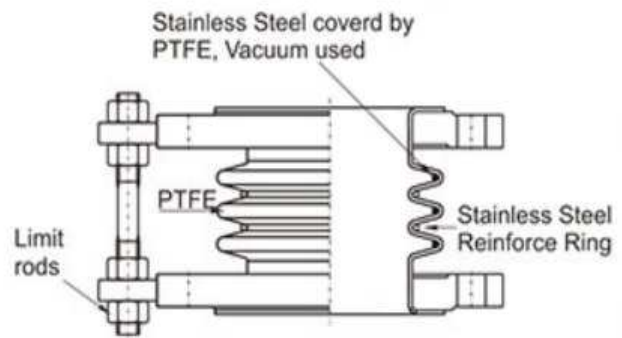
FLUID SYSTEM CO., LTD.

8/11 PRACHAUTID86 THUNGKRU BANGKOK THAILAND 10140

[WWW.FLUIDSYSTEM.CO.TH](http://WWW.FLUIDSYSTEM.CO.TH) ,E-MAIL: SALESFLUIDSYSTEM@GMAIL.COM

# PTFE EXPANSION JOINT

## FB Type PTFE Expansion Joint



### Construction

Item	Parts name	Standard/Material	Note
1	Bellow	PTFE	
2	Flange drilling	ANSI150,PN10,JIS10K/CS,SUS304,SUS316	
3	Vacuum ring	Stainless steel covered with PTFE	
4	Reinforcing ring	Stainless steel	
5	Limit rod	Carbon steel, Stainless steel	

### Specification

Size A	Size B	No. of convolution	Face to Face Length (mm)	Axial movement $\Delta x(\text{mm})$	Lateral movement $\Delta y(\text{mm})$	Angle movement $\Delta \theta(^{\circ})$	Nominal pressure/vacuum (Mpa)
25	1	3	100	$\pm 15$	8	25	0.40 / -0.09
32	1 1/4	3	100	$\pm 15$	10	25	0.40 / 0.09
40	1 1/2	3	100	$\pm 18$	14	25	0.40 / -0.09
50	2	3	100	$\pm 18$	15	25	0.40 / -0.09
65	2 1/2	3	110	$\pm 20$	16	25	0.35 / -0.09
80	3	3	120	$\pm 20$	16	25	0.30 / -0.09
100	4	3	120	$\pm 25$	17	20	0.30 / -0.09
125	5	3	130	$\pm 27$	17	18	0.30 / -0.09
150	6	3	140	$\pm 27$	16	15	0.25 / -0.09
200	8	3	150	$\pm 27$	15	13	0.25 / -0.09
250	10	3	160	$\pm 27$	12	10	0.25 / -0.09
300	12	3	170	$\pm 27$	8	5.5	0.25 / -0.09
350	14	3	180	$\pm 30$	8	4.5	0.15 / -0.09
400	16	3	200	$\pm 30$	8	4	0.15 / -0.09
450	18	3	200	$\pm 30$	8	3.5	0.15 / -0.09
500	20	3	220	$\pm 30$	8	3	0.15 / -0.09
600	24	3	240	$\pm 30$	8	2.9	0.15 / -0.09

Note: This specification is standard item for another requirement please contact us.

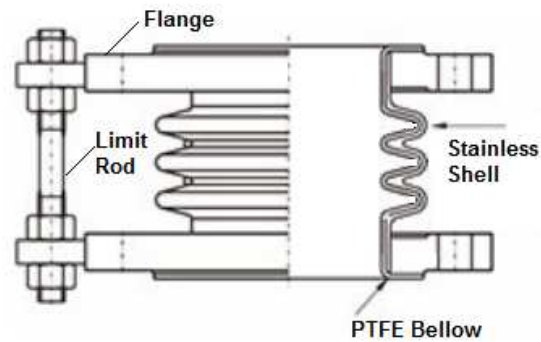
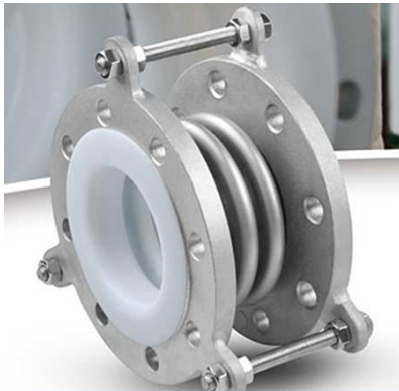
FLUID SYSTEM CO., LTD.

8/11 PRACHAUTID86 THUNGKRU BANGKOK THAILAND 10140

[www.fluidsystem.co.th](http://www.fluidsystem.co.th) ,e-mail: [salesfluidsystem@gmail.com](mailto:salesfluidsystem@gmail.com)

# PTFE EXPANSION JOINT

## FG Type Stainless Steel Housing Expansion Joint Lined with PTFE



### Construction

Item	Parts name	Standard/Material	Note
1	Bellow	PTFE	
2	Flange drilling	ANSI150,PN10,JIS10K/CS,SUS304,SUS316	
3	Stainless steel shell	Stainless steel	
4	Limit rod	Carbon steel, Stainless steel	

### Specification

Size A	Size B	No. of convolution	Face to Face Length (mm)	Axial Movement $\Delta X$ (mm)			Rigidity Kx (N/mm)		
				@Design Pressure (MPa)					
				0.6	1.0	1.6	0.6	1.0	0.6
32	1 1/4	3	100	12	10	8	192	298	476
40	1 1/2	3	100	15	12	10	208	342	648
50	2	3	100	15	12	10	209	467	859
65	2 1/2	3	110	16	12	9	216	568	1100
80	3	3	120	16	12	9	304	676	1287
100	4	3	120	19	15	12	466	831	1393
125	5	3	130	19	15	12	533	996	1682
150	6	3	140	18	15	12	637	1170	1980
200	8	3	150	36	29	24	427	702	1345
250	10	3	160	36	18	23	510	851	1649
300	12	3	170	45	36	30	442	724	1384
350	14	3	180	45	36	29	475	784	1508
400	16	3	200	44	35	28	530	882	1708
450	18	3	200	44	34	28	582	980	1902
500	20	3	220	43	34	28	640	1079	2102
600	24	3	240	73	50	38	540	1463	3202
800	32	3	280	74	47	40	310	875	1585

Note: This specification is standard item for another requirement please contact us.

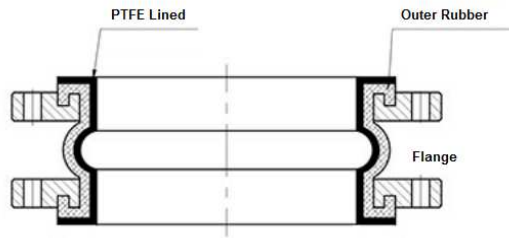
FLUID SYSTEM CO., LTD.

8/11 PRACHAUTID86 THUNGKRU BANGKOK THAILAND 10140

[www.fluidsystem.co.th](http://www.fluidsystem.co.th) ,e-mail: [salesfluidsystem@gmail.com](mailto:salesfluidsystem@gmail.com)

# PTFE EXPANSION JOINT

## PTFE Lined Single Spherical Rubber Expansion Joint



FX-1 Type

### Construction

Item	Parts name	Standard/Material	Note
1	Bellow	EPDM,NBR Lined with PTFE	
2	Flange drilling	ANSI150,PN10,JIS10K/CS,SUS304,SUS316	
3	Vacuum ring	Carbon steel	

### Specification

Size A	Size B	Face to Face Length (mm)	Axial movement Elongation (mm)	Axial movement Compression (mm)	Lateral movement $\Delta y$ (mm)	Angle movement $\Delta\theta$ (°)	Nominal pressure (Mpa)
32	1 1/4	95	6	9	9	15	1.0
40	1 1/2	95	6	10	9	15	1.0
50	2	105	7	10	10	15	1.0
65	2 1/2	115	7	13	11	15	1.0
80	3	135	8	15	12	15	1.0
100	4	150	10	19	13	15	1.0
125	5	165	12	19	13	15	1.0
150	6	180	12	20	22	15	1.0
200	8	210	16	25	22	15	1.0
250	10	230	16	25	22	15	1.0
300	12	245	16	25	22	15	1.0
350	14	255	16	25	22	15	1.0
400	16	255	16	25	22	15	1.0
450	18	255	16	25	22	15	1.0
500	20	255	16	25	22	15	1.0
600	24	260	16	25	22	15	1.0
800	32	260	16	25	22	15	1.0

Note: This specification is standard item for another requirement please contact us.

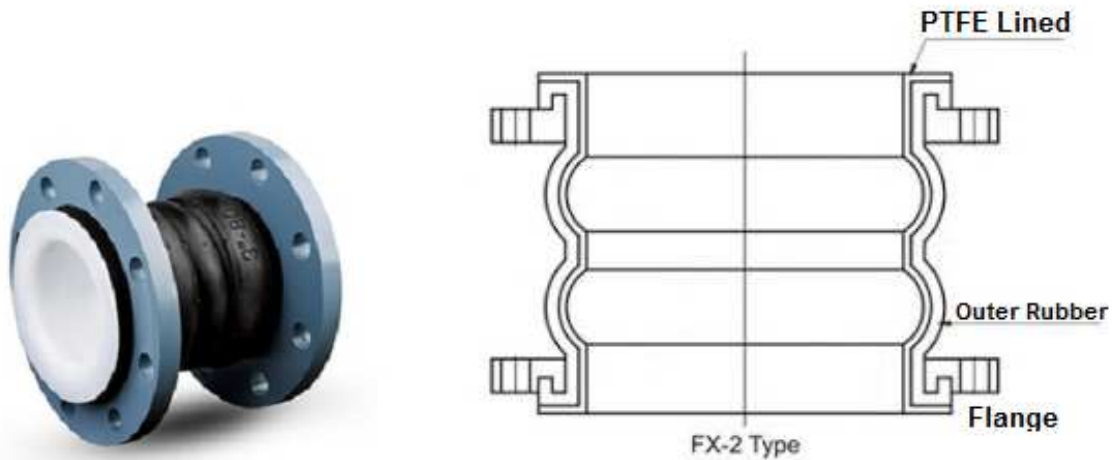
FLUID SYSTEM CO., LTD.

8/11 PRACHAUTID86 THUNGKRU BANGKOK THAILAND 10140

[www.fluidsystem.co.th](http://www.fluidsystem.co.th) ,e-mail: [salesfluidsystem@gmail.com](mailto:salesfluidsystem@gmail.com)

# PTFE EXPANSION JOINT

## PTFE Lined Double Spherical Rubber Expansion Joint



### Construction

Item	Parts name	Standard/Material	Note
1	Bellow	EPDM,NBR Lined with PTFE	
2	Flange drilling	ANSI150,PN10,JIS10K/CS,SUS304,SUS316	
3	Vacuum ring	Carbon steel	

### Specification

Size A	Size B	Face to Face Length (mm)	Axial movement Elongation (mm)	Axial movement Compression (mm)	Lateral movement $\Delta y$ (mm)	Angle movement $\Delta\theta(^{\circ})$	Nominal pressure (Mpa)
50	2	165	30	50	45	40	1.0
65	2 1/2	175	30	50	45	40	1.0
80	3	175	30	50	45	40	1.0
100	4	225	35	50	40	35	1.0
125	5	225	35	50	40	35	1.0
150	6	225	35	50	40	35	1.0
200	8	330	35	60	35	30	1.0
250	10	330	35	60	35	30	1.0
300	12	330	35	60	35	30	1.0
350	14	330	30	50	30	30	1.0
400	16	330	30	50	30	30	1.0
500	20	340	30	50	30	30	1.0

Note: This specification is standard item for another requirement please contact us.

FLUID SYSTEM CO., LTD.

8/11 PRACHAUTID86 THUNGKRU BANGKOK THAILAND 10140

[www.fluidsystem.co.th](http://www.fluidsystem.co.th) ,e-mail: [salesfluidsystem@gmail.com](mailto:salesfluidsystem@gmail.com)